



Margate Yacht Club Information Pack



MESSAGE FROM THE COMMODORE

Margate Yacht Club prides itself on being a friendly club, making all visitors feel welcome. The clubhouse is located on Fort Hill, opposite the new Turner Contemporary Gallery and has a panoramic view from the first floor lounge bar.

The club is a Royal Yachting Association recognised Training Centre and a full "On Board" club which means the club meets the RYA national standard to support increased youth participation in sailing. We are able to run accredited Level 1 and 2 dinghy sailing courses.

Margate Yacht Club encourages people of all ages to participate in sailing, whether it's a trial sail or taking part in the club racing programme. The Club is fortunate to own several club boats (including RS Visions, RS Qubas and a Laser Bahia) which are used by our qualified RYA dinghy instructors as part of our ongoing training programme. They are also available to members. In addition, the Club has 2 RIB safety boats.

Most of the sailing takes place in dinghies and to a sailing programme that runs from April to November. This programme includes various races along with dedicated training days/practice sessions to enable everyone to gain experience. Some members also sail cruisers.

We welcome cadet members who may take part in the club races and Saturday morning practice sessions held regularly during the season (see the sailing programme on the website).

The majority of races take place on Sundays. There is also a Wednesday evening Half Moon Series that runs through the summer (May to August).

2 affiliated groups also use the Club facilities and premises:

- Thanet Sub Aqua Club
- The Wastelands Reading Group

We hope to see you at our Club in the near future. Whatever your level of experience on the water, you will be welcome!

Sue Anderson,

Commodore

Membership Details

In order that you are fully acquainted with the Club before you join, we ask you to contact the club via email to arrange an informal meeting. This will give you an opportunity to raise any questions you may have and a chance for us to inform you of member's responsibilities. We will then ask you to complete and on line application form and to pay the relevant fee. You will receive a welcome letter and a copy of the Club handbook. The annual fees are available from the WEB site www.margateyachtclub.org.

***Note:** The Club reserves the right to alter details of fees without notice. New fees are set at the AGM each autumn. Boat park fees are due in March each year and are set by the committee.*

We hope that you will find the waters of Margate and beyond to your liking - there are many areas to explore. As well as cruising activities, which are very much left up to the individual members, we have a vibrant racing fraternity. Our training days help develop members' sailing skills, and teach the rules of sailing. We always welcome new members so please feel free to join in any of our racing, training and cruising activities.

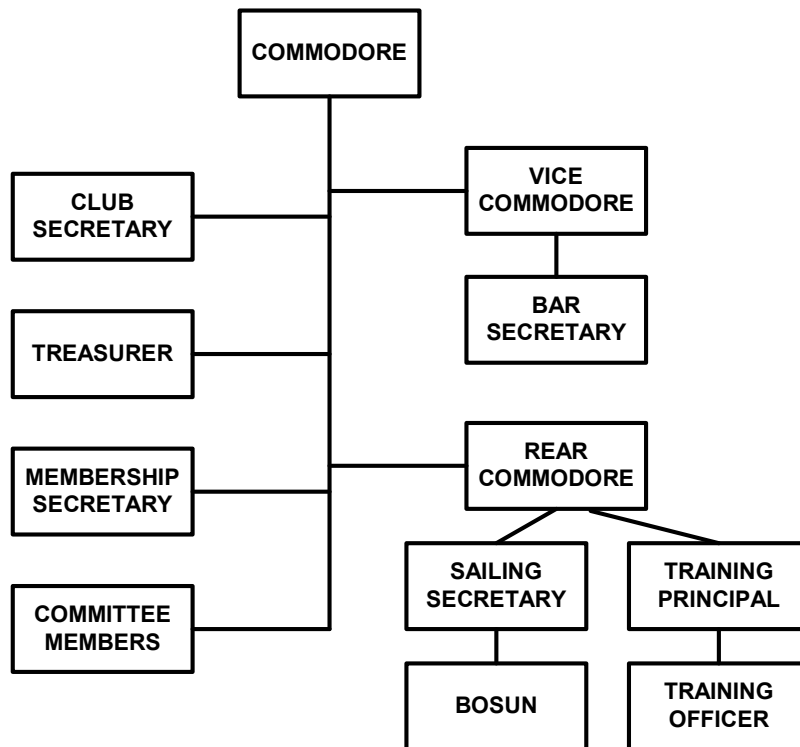
The Club is run on a voluntary basis by the members. We will therefore ask for your help, wherever possible with the various tasks. This will be explained in more detail at your introductory meeting.

When you apply for membership of the Club, you are agreeing to abide by the Club Rules which are set out in the handbook. We would ask that you pay particular attention to the following:

The continuing good health of a small club such as ours is dependent upon the contributions of its membership whether through serving on the Club Committee, making skills or resources available, taking part in the work parties, and taking turns, as officer of the day/Safety Boat driving roster. Relevant training is available: just ask a Committee member.

COMMITTEE MEMBERS

CLUB COMMITTEE STRUCTURE



SAFETY

The basic principle is that any member who sails at Margate, outside any recognised training session, but including organised racing and free sailing, is deemed to accept the ordinary 'perils of the sea' and thus cannot complain of injury or damage if he or she voluntarily accepts the risks of sailing. This is summed up in the legal phrase 'Volenti non fit injuria'.

Parents and guardians are reminded that "Margate Yacht Club is only able to provide patrol boat attendance during the hours of Club racing, coaching sessions or taster days". Outside these hours, parents and guardians have sole responsibility for their children and must be in attendance at the Club whilst their children are present.

A suitable size /age life Jacket or buoyancy aid **MUST** be worn at all times when sailing and when using the safety boats.

All owners shall insure their boats for at least third party liability. It is recommended that this includes a minimum extent of £2,000,000 and ensure they are in a seaworthy condition. A skipper is responsible for making their own assessment of the competence of their crew and on the weather conditions to determine whether it's safe for them to launch or sail.

The skipper is responsible for ensuring their rescue provision is adequate.

Members are required to report defects or breakages of any MYC craft or safety equipment to a committee member, and record the problem and boat affected on white board located in the buoyancy aid room.

Members must take care when moving boats between the boat park and the sea, as the general public and RNLI crew, use the same area and slip ways.

The club first aid boxes are situated in the following places:-

- (1) In the club house lobby
- (2) On the 2nd floor landing near the kitchen
- (3) In each storage container in the boat park

FACILITIES

Margate Yacht Club has 2 areas of operation: the Club House at 12 – 14 Fort Hill road (opposite the harbour entrance), and the boat park behind the Turner Centre and Lifeboat station. Keys are available from the membership secretary for a small deposit to access both areas outside scheduled events. If you are the last person to leave the club house, please ensure all lights are turned off, all fire doors closed and the front door is double locked. Similarly, always lock the boat park gates on leaving.

Members, guests and visitors may use the Club premises and any other facilities of the Club at their own risk and implicitly accept that: The Club will not accept any liability for any damage or loss of property belonging to members, their guests or visitors to the Club.

The Club will not be liable for personal injury arising out of the use of the Club premises or facilities, nor out of participation in any race organised by the Club whether or not such damage or injury could have been attributed to or was occasioned by the neglect, default or negligence of any of the Officers, Committee or servants of the Club.

The Club facilities and grounds are open to use by members and each individual is responsible for helping with their upkeep. Housekeeping is ongoing at the Club and your support in helping keep the Clubhouse and grounds to a standard that we all enjoy is appreciated.

SMOKING is not permitted in the Clubhouse or boat park.

The clubhouse galley is available for use by members but they are required to clean up afterwards. The clubhouse workshop is available for use by members but they are required to clean up afterwards. Please contact a committee member before leaving any items in the workshop.

The BAR

MYC holds a Private Club licence for the sale of alcohol. If you would like to bring friends into the club for a drink, we require that non members sign in to the club visitor's book in the first floor lobby area. The club asks that all safety boat crew and trainers refrain from drinking alcohol. You will find the bar prices very competitive – so enjoy the facility. If you have a tippie you would like stocked please mention this to a member of the committee.

WORK AREA

We have a number of areas within the club house. We currently have a dedicated training room on the second floor and a workshop area at the rear of the club. If you want to book either of these please contact the Vice Commodore to check if they are available.

Opening times

The club house is open on Sunday from 12 noon until 2pm, where members and guests are encouraged to meet over a glass of wine, or a coffee. In addition, the club organises **interesting and fun social events** that are advertised on the general notice board. You are invited to include your name

and guests as required on the attendee list for an event. Additionally, the club social team will email members about forthcoming events.

The events are organised by the social committee. Typically the events are held once a month in the club house. MYC believes that the social side of the club is as important as the sailing – members are often surprised with what they learn about sailing at social events and it's not uncommon for a great camaraderie to develop from these events to the benefit of all members. The social side also helps non sailing family members to still be involved in the club without getting their feet wet! So please come along and enjoy. Warning the social events can be addictive!

COMMUNICATIONS

We do our very best to communicate with our members. The club issues all its members with a yearly programme in January. Additionally, as the majority of our members have email access we will send event details via this media. The club may also text members' mobile phones (if they have provided the information) for updates. If you would prefer not to be contacted by email/text let us know.

We are a very friendly club! If you need to know anything ask a committee member we will always try to help.

CAR PARKING

Car parking is at a premium in Margate, we recommend that you park outside the boat park in the Rendezvous car park, which at the time of writing is free. Access to this is past the club house up Fort Hill turn left opposite The Britannia Pub into Fort Lower Promenade, and left again towards the boat park.

CLUB BOATS

The Club owns a number of boats that are available for members to use, there is a small fee when using a club boat (currently £2 per adult). Please put the money in the tin situated under the arch. This is assist in the general repair of club boats. Any defects or damage to the boats must also be communicated to a committee member and recorded on the on white board located in the buoyancy aid room.

- 4 x RS Qubas – single / double sail. Single / double handed. Beginner – Intermediate. Age range 11 – adult. Very versatile beginner / training boat.

- 2 x Visons Double handed, Beginner – Intermediate. Age range 11 – adult. Very versatile beginner / training boat.
- 1 Laser Bahia, the biggest of the Club training boats, can accommodate up to 4 adults.

Members may be liable for repair of damage.

The Club's boats may be used by members for general sailing who have gained a minimum of RYA stage 2 certificate or equivalent experience. This will allow new members the opportunity to sail whilst choosing a boat to purchase. If you need any assistance in rigging any boat please ask a fellow club member.

CLASSES OF BOATS

The club is open to all boats.

Apart from the Club's rescue craft, powercraft may not be operated from the Club premises without written authority of the Committee. This is given only in special circumstances. Water skiing and jet-skiing from the Club are forbidden.

YOUR BOAT

All Sailing dinghies must be insured to at least third party, and we recommend for a minimum of £2,000,000 in respect of third party risks.

The safety of a boat and her entire management, including insurance, shall be the sole responsibility of the owner/competitor racing the boat, who must ensure that the boat and crew are adequate to face the conditions that may arise in the course of a race. Neither the establishment of these sailing instructions, nor the inspection of the boat under these conditions in any way limits or reduces the absolute responsibility of the owner/competitor for his crew, his boat and the management thereof. The race organisers shall not be responsible for any loss, damage, death or personal injury howsoever caused to the owner/competitor, his skipper or crew, as a result of their taking part in the race or races. Moreover every owner/competitor warrants the suitability of his boat for the race or races.

DINGHY PARK

Access to the boat park is via the locked gate which should be kept shut at all times.

Sailing dinghies and tenders must be stored only on the spaces allocated to them. Another type of boat or craft shall only be allowed on the berths or the Club site at the discretion of the committee.

Trailers and trolleys must be marked up with a means of identifying ownership. This can be achieved by tagging the trailer / trolley with the Members name and membership number.

Abandoned boats & equipment shall be disposed of by the club in accordance with the Club rules.

TRACTOR

The boat park contains a locked container. The container has the tractor stored within. Access to the containers is via a padlock, the key to which is stored in the club house below the general notice board counter.

Only club members who hold a full driving licence and have undertaken tuition from a flag officer can drive the tractor. The tractor cannot be operated without the flashing warning beacon being in operation, and must be driven with great care. Other club members and the general public will be moving around the area and great care is required, if you are unsure at any time, stop the tractor and obtain support from other club members.

RACING

Race times and dates are shown on the sailing programme, a copy is available on the sailing notice board and the website.

Sunday racing starts at 10.30 sharp, and boats are expected to be on the water at 10.00, with a general arrival at the boat park at 9.00. Safety crew and race officers are requested to arrive promptly at 9.00.

In the summer Wednesday evening racing is schedule, with an 18.30 start time, and boats are expected to be on the water at 18.00 with a general arrival at the boat park at 17.30. Safety crew and race officers are requested to arrive promptly at 17.30.

Members are requested to help ensure the safety boat is on the water before any sailing boats are launched, and also be available to help retrieve the safety boat after the race.

RYA

The RYA (Royal Yachting Association) is the governing body of sailing to which MYC is affiliated. The RYA provides extensive support to the Club through training, grant applications and Club development.

ONBOARD

MYC is also a RYA On Board Club. The On-Board status is all about more children and young people learning to sail. More importantly, it's about keeping them involved in sailing, for life, and the club through its programmes supports this. We are working with families with youngsters to establish a regular Saturday 'Kids Club' offering regular, supervised practical sessions and also offer periodic taster/ 'have a go' sessions.

TRAINING

Margate Yacht Club became an RYA recognised Training Centre in 2009 and can provide training for both adults and children. For details of specific training see the Notice Board or contact the Training Principal.

RECREATIONAL SAILING

Recreational sailing is defined as sailing at Margate at times outside the club's scheduled activities. The club is available for use by members at all times. The decision of a member to sail at a time other than during organised activities is entirely at their own risk. Safety boat cover will not be available outside organised activities

Sailors are strongly advised to wear suitable clothing whilst on the water appropriate to the prevailing weather conditions. The wearing of a wet suit or dry suit is recommended for the Frostbite Series

Club members organise a number of cruising events throughout the year, and these are posted on the "Cruising Notice Board"

All boats must conform to class rules in relation to buoyancy.

Sailing alone is not recommended though not prohibited.

Sailing during hours of darkness is not recommended.

Certificates of competence are not required but members are encouraged to avail themselves of the available RYA courses.

The club is available for use by members at all times.

SAFETY BOATS

The club has two Rigid Inflatable Boats (RIBs), which are used for Club racing and on-water events for the purposes of providing safety boat cover due to their ease of manoeuvrability and low freeboard. The RIBs are stored in the two containers within the boat park. These are locked with the keys stored in the club house.

All members are expected to assist in the launching and retrieval of the safety boat before and after organised events.

Only persons authorised can drive the club RIB safety boats. This also requires a level 2 or higher RYA certificate in the powerboat scheme.

Nobody under the age of sixteen years can operate the club's powerboats unsupervised.

Wear your personal buoyancy aid.

Check you have the key and the engine kill cord, which must be attached during use.

Check you have paddles or oars.

Check the anchor, chain and warp are prepared for efficient deployment.

Check the heaving line is ready for efficient deployment.

Check you have a bucket, bailer or bilge pump.

Check the fuel state and fill up as necessary.

The safety boat should be manned by two people, subject to weather conditions.

At least one of the crew should be dressed to enter the water.

Attend all capsizes to count heads and check all is OK.

Cut engine whilst dealing with people who are in the water.

The club operates a number of VHF radios, both from shore and the safety boats. The club has a number of trained and licensed VHF operators who can supervise the use of the radios during organised club events.

BOAT LAUNCHING

There are two launching ramps, the first at the Rendezvous is located next to the Life Boat Station, whilst the second at the harbour arm is located opposite the club house. The Rendezvous beach and slipway area will be covered with water at high tide, so please take care when leaving your trailers on the beach. Launch and recover at the far West of the beach, as rocks are awash from the middle going westwards.

The harbour arm ramp is used by the RNLI, so please keep the slipway clear. The harbour arm provides good protection when launching, but the depth remains limited until you reach the end of the harbour arm. With a North wind we recommend you keep clear of the starboard wall when launching, as you can get blown onto the

wall. Access to both ramps is via public areas and maximum care must be taken when moving your boats.

